

WOOL AND THE GANG

#MADEUNIQUE



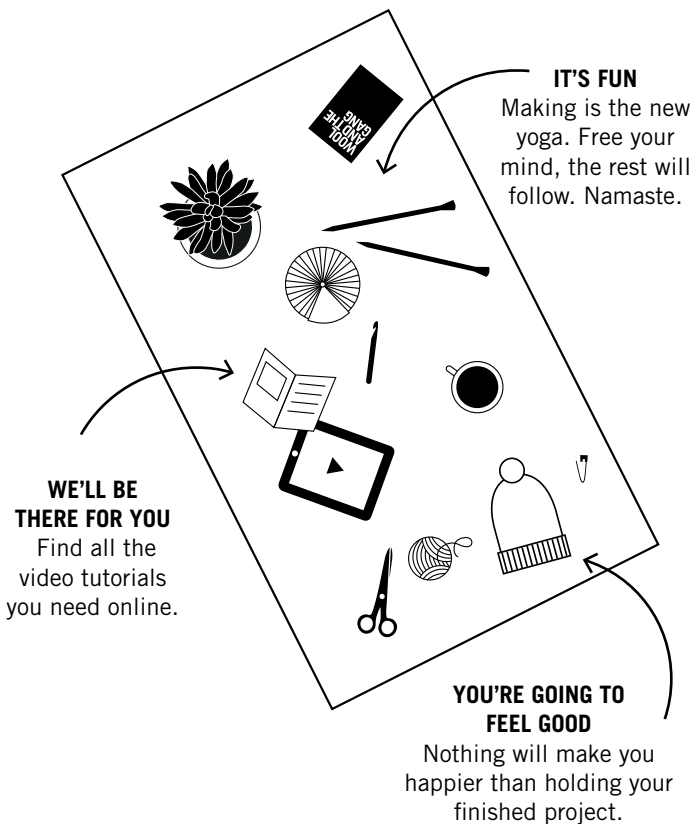
MERYL STRIPE SWEATER

ADVANCED

6.5MM (US10.5) KNITTING NEEDLES

© Wool and the Gang LTD. 2015

YOUR ADVENTURE STARTS NOW



RECIPE FOR SUCCESS

1

GET YOUR TOOLS READY.

Everything you need to get making.

2

FAMILIARISE YOURSELF WITH THE TECHNIQUES.

Everything from the stitches used to the finishing touches for your project.

3

GET TO KNOW YOUR YARN.

Before you start your piece, play around with your new yarn to get used to it, and to check your tension.

4

WOOL SCHOOL

Pick up your needles & yarn and make the magic happen! For a little extra help, check out our Wool School at:

www.woolandthegang.com/t/how-to

5

#WOOLANDTHEGANG

When you're done - let the world know.

LET'S GET KNITTING

Tool kit

- 11 balls of WATG's Sugar Baby Alpaca in colour A
- 5 balls of WATG's Sugar Baby Alpaca in colour B
- 1 Meryl Stripe Sweater pattern
- 1 pair of 6.5mm (US10.5) knitting needles
- 1 sewing needle

Tension

To ensure your knitting has the same measurements as the pattern, it is a good idea to make a tension swatch before you start knitting your project. A tension swatch is a small sample of your knitting where you count the stitches and rows and check them against the tension given in the pattern. If you get MORE stitches/rows than the pattern's tension, it means your knitting is tighter. If you get FEWER stitches/rows than the pattern, your knitting is looser. Sometimes, it works to knit tighter or looser to compensate.

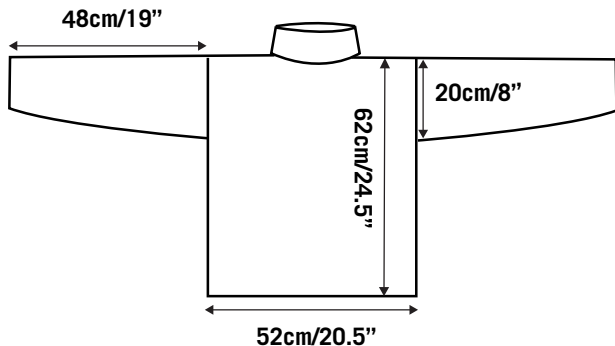
When you make your swatch, make sure it is large enough for you to measure 10 cm/4" without including the stitches/rows closest to the edges (as these often have a slightly different tension). When you're done swatching, simply unravel and re-use the yarn to start knitting your Meryl Stripe Sweater.

Brioche stitch (with 2 strands of yarn held together)

- 10 cm/4" = 10 stitches
- 10 cm/4" = 28 rows

All knitting techniques can be found at the back of the pattern.

MEASUREMENTS



Help's only a stitch away. Watch the video tutorials online at www.woolandthegang.com/videos

Pssst! Remember that you must not copy our patterns and sell, or even give them away for free, in accordance with copyright law. Also, you must not sell any articles made from our patterns.

HOW TO KNIT YOUR MERYL STRIPE SWEATER

BODY

Follow the instructions twice to make the front and back.

- 1 With 2 strands of colour A held together, cast on 54 stitches using the cable cast on technique.

- 2 Work 6 rows in brioche stitch.

- 3 Change to colour B, but don't cut colour A. Work 4 rows in brioche stitch.

- 4 Change to colour A, but don't cut colour B. Work 4 rows in brioche stitch. Now pick up colour B and wrap it a full turn around colour A - this prevents big loops from forming at the edge of your knitting where you're carrying the yarn not currently in use.

- 5 With colour A, work 4 rows in brioche stitch.

Continue working in this stripe pattern: 4 rows with colour B, then 8 rows with colour A.
- 6 Work in brioche stitch until your piece measures 62cm/24.5" from the cast on edge (approx. a further 172 rows). Your last row must be a wrong-side row.

- 7 Cast off 16 stitches (using the technique for brioche), then work in brioche stitch to the end of the row. You now have 38 stitches.

- 8** Cast off 16 stitches as before, then work in brioche stitch to the end of the row. (22 stitches.)
-

Next, you will make the neck.

- 9** Work in brioche stitch until your piece measures 21cm/8.5" from the start of the neck (approx. a further 60 rows).
-

- 10** Cast off in brioche stitch.

SLEEVE

Follow the instructions twice to make the two sleeves.

- 1 With 2 strands of colour A held together, cast on 30 stitches using the cable cast on technique.

 - 2 Work 6 rows in brioche stitch.

 - 3 Change to colour B, but don't cut colour A. Work 4 rows in brioche stitch.

 - 4 Change to colour A, but don't cut colour B. Work 4 rows in brioche stitch. Now pick up colour B and wrap it a full turn around colour A.

 - 5 With colour A, work 4 rows in brioche stitch.

 - Continue working in this stripe pattern: 4 rows with colour B, then 8 rows with colour A.
 - 6 Work 12 rows in brioche stitch.

 - 7 Increase row: Work 3 stitches in brioche stitch, make a brioche increase, work in brioche stitch until you have 4 stitches left of your row. Make a brioche increase, work in brioche stitch to the end of the row. (34 stitches.)

 - 8 Work 4 stitches in brioche stitch.

 - ★ Knit 1 stitch, make a yarn over, slip 1 stitch purl-wise. Knit the next stitch and its yarn over together. ★
-

Work in brioche stitch until you have 6 stitches left of your row. Repeat the section inside the stars. Work to the end of the row in brioche stitch.

9 Work 2 rows in brioche stitch.

10 Repeat steps 3 to 9 twice. (42 stitches.)

11 Repeat steps 3 to 5 once more.

12 Repeat steps 3 and 4 once more. Cut colour B.

13 Work 2 rows in brioche stitch.

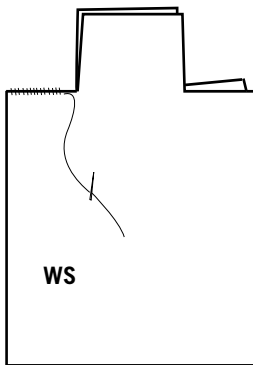
14 Cast off in brioche stitch.

ASSEMBLY AND FINISHING

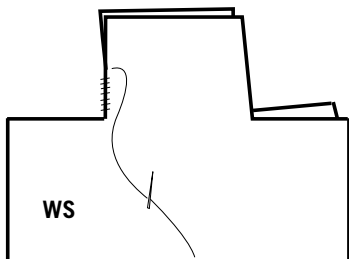
The sweater is designed to be worn with the neck rolled down. The neck is seamed with the wrong sides facing. The rest of the sweater is sewn with the right sides facing.

- 1 Place your front and back panels on top of each other, with the wrong sides touching.

- 2 Thread your sewing needle with a length of yarn. Starting at the outside edges, use the horizontal invisible seam technique to sew up the shoulder seams.

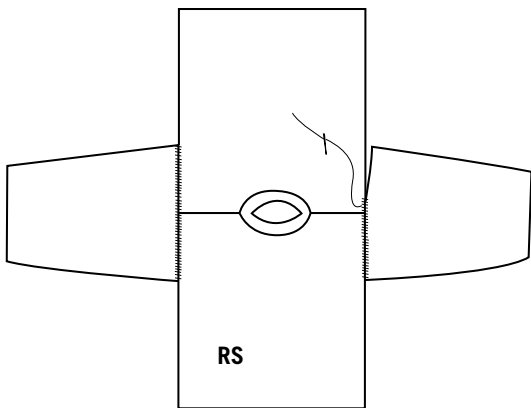


-
- 3 With the wrong side facing out, use the vertical invisible seam technique to sew the side neck seam.
-

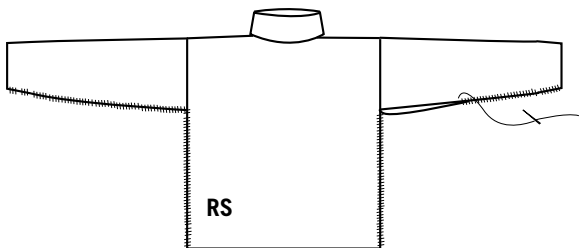


4 Repeat steps 1 to 3 for the other side.

5 With the right sides facing up, place your sleeves next to the sewn-together body, so the centre of the cast off edge on the sleeve lines up with the shoulder seam. Use the perpendicular invisible seam technique to attach the sleeves to the body. Repeat for the other sleeve.



- 6** With the right side facing outwards, fold your sweater along the shoulders and sleeves. Using the vertical invisible seam, sew the side seams. Starting again at the bottom of the sleeve, sew the sleeves in the same way.



- 7** Weave in the loose ends.



Help's only a stitch away. Watch the video tutorials online at www.woolandthegang.com/videos

KNITTING TECHNIQUES

Work! Work! Work!

There are two main ways to 'work' stitches: they can be knitted or purled. When the pattern asks you to 'work' a number of stitches/rows/cm, it will always specify which stitch pattern to work in.

Working with multiple strands of yarn

Sometimes, a pattern will tell you to work with two or more strands. To do this, just hold all the strands together and knit with them as if they were a single, thick yarn!

Cable cast on / [Online video tutorial](#)

Create a slipknot on the left hand needle. Knit on one stitch, creating two stitches on the left hand needle. Now insert the right needle between the two stitches, wrap and bring through. Transfer the newly created stitch onto the left hand needle. Repeat until you have cast on the number of stitches indicated in the pattern.

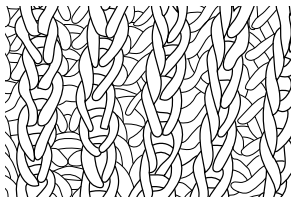
Working with stripes

When working with stripes, there is no need to cut the yarn every time you change colour. Instead, you simply carry the yarn up the edge of your knitting - this way you won't have a ton of yarn ends to sew in at the end! To avoid long loops at

the edges where the yarn is carried, twist your yarns together every few rows.

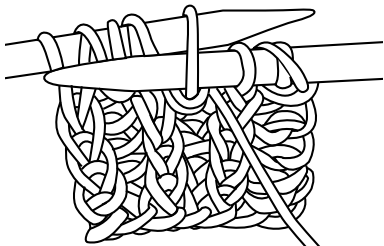
Brioche stitch

This is a gorgeous, double-sided fabric - nice and chunky, with great drape.

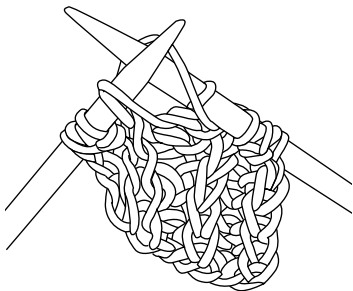


Cast on an even number of stitches, and work the following set-up row:

1. Hold the yarn in front of your work, and slip 1 stitch purl-wise.



2. Bring the yarn over the right needle to the back of your work (this is a 'yarn over').

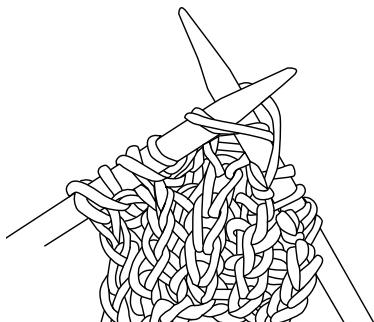


3. Knit 1 stitch.

4. Repeat steps 1 to 3 to the end of the row.

To continue working in brioche, repeat the following row:

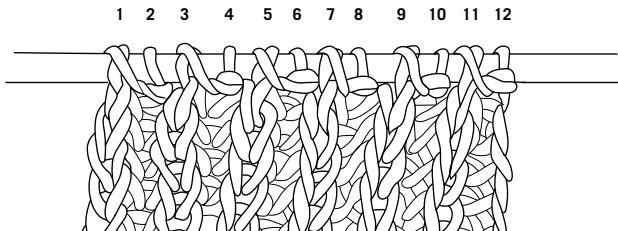
Pattern row: ★ Hold the yarn in front of your work and slip 1 stitch purl-wise. Make a yarn over. Knit the next stitch and its yarn over together. ★



Repeat the section inside the stars to the end of the row.

When you count the number of stitches on a row of brioche, don't count the yarn overs as separate stitches, they are paired with the knit stitches, so only count the knit and purl columns.

To count the number of rows, count each 'V' as 2 rows.



Increasing in brioche stitch

To maintain the brioche pattern, a brioche increase increases your work by 2 stitches.

Start by knitting the next stitch and the yarn over together in the regular way - but don't slip them off the left needle. Make a yarn over. Now insert the right needle purl-wise into the same stitch (and yarn over) again, and make another knit stitch. Slip the stitch and yarn over off.

Adding a new ball of yarn / [📺 Online video tutorial](#)

When your ball of yarn runs out, tie a loose knot on to the tail

with the new ball of yarn and slide it up to the needle. Tighten the knot. Continue knitting with the new yarn.

Casting off in brioche stitch

Purl one stitch, then knit the next stitch and its yarn over together. Use the tip of the left needle to lift the first stitch over the last one, and off the needle.

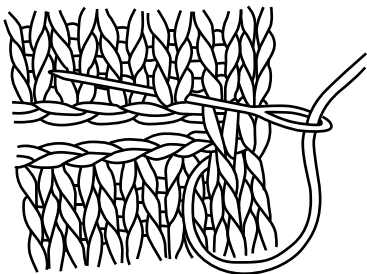
★Purl the next stitch, and lift the previous stitch over it and off the needle. Knit the next stitch and its yarn over, and lift the previous stitch over it and off the needle.★

Repeat the section inside the stars until there are no stitches on the left needle and just one stitch on the right needle. Cut the yarn, leaving a 15 cm/6" end. Pull on the last loop until the end pops through - you've now secured the last stitch.

FINISHING TECHNIQUES

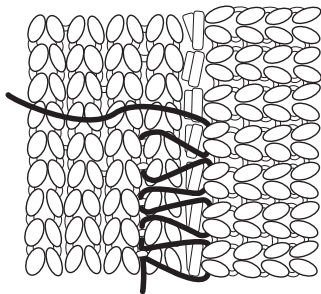
Horizontal invisible seam technique / [▶ Online video tutorial](#)

This technique is used for sewing together horizontal edges (like cast on and cast off edges). Align the two edges so that they are lined up stitch by stitch. Insert the sewing needle under a V stitch and then under the corresponding V stitch on the other side. Continue in this way until the seam is complete.



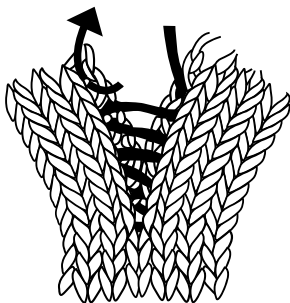
Perpendicular invisible seam / [▶ Online video tutorial](#)

Align the pieces to be seamed side-by-side with the two pieces at right angles to each other. Insert the sewing needle through the vertical 'V' on the piece where you are joining a cast on or cast off edge, and then through the horizontal bar on the piece where you are joining a side edge. Repeat this and pull the yarn so that the two pieces join together. You will see that you have more rows to sew than stitches. To compensate for this, insert the needle under two horizontal bars on the side edge at the same time every third stitch.



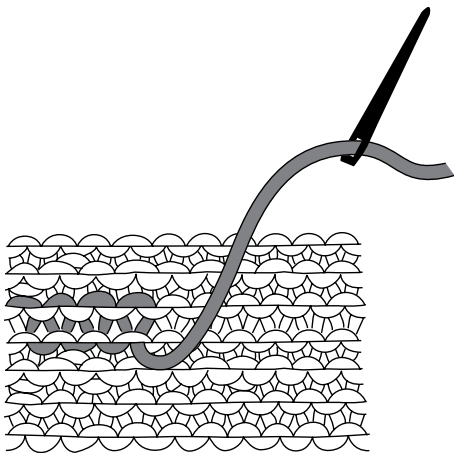
Vertical invisible seam / [Online video tutorial](#)

This technique is used to join two side edges. Line up the edges side by side with the right side of the fabric facing up. Insert your sewing needle under the first horizontal bar between the first two stitches on the edge you want to join. Pull the yarn through and insert the needle through the opposite horizontal bar on the other piece. Sew back and forth through the horizontal bars along the edge. To tighten the stitches, pull the yarn gently - and they will disappear.



Weaving in the ends / [▶ Online video tutorial](#)

Weave the ends of your yarn into your knitting to finish it off and stop it from unravelling. Thread the tail onto the sewing needle. Weave the yarn along the edge of your knitting as shown in the diagram. Weave in approximately 10 cm/4", then cut the tail.



MAKING MEMOIRS

STARTED ON

FINISHED ON

WHERE I MADE IT

-

-

-

MADE FOR

☐ Me ☐

COLOUR COMBO

THIS PROJECT WAS

() easy peasy () nice () challenging () hardcore

I FEEL    

OTHER THOUGHTS



Wool and the Gang



@woolandthegang



@woolandthegang



WATGsnaps



Wool and the Gang



woolandtheganghq

YOUR PROJECT DESERVES SOME SEXY YARN



CRAZY SEXY WOOL

100% Peruvian Wool



SUGAR BABY ALPACA

100% Baby Alpaca



WOOL ME TENDER

100% Peruvian Wool



JERSEY BE GOOD

98% Cotton
2% Elastane



MIXTAPE YARN

80% Cotton
20% Polyester



BILLIE JEAN

100% Upcycled Denim



SHINY HAPPY COTTON

100% Peruvian
Pima Cotton



WOOLLY BULLY ALPACA

80% Superfine Alpaca
20% Merino Wool



SHEEPACA YARN

50% Baby Alpaca
50% Merino Wool



TAKE CARE MOHAIR

78% Kid Mohair
13% Wool / 9% Polyamide



FEELING GOOD

70% Baby Alpaca
7% Merino / 23% Nylon

WWW.WOOLANDTHEGANG.COM

**WOOL
AND THE
GANG**

V551722211

